

http://www

RDS Interface

October 2016

RDS Advantage, 6801 N. Broadway, Suite 120, Oklahoma City, OK 73116
www.rdsadvantage.com rds@rdsadvantage.com 405.840.5177 or 800.337.6328

Food for Thought -

Research by Dr. Richard J. Krejcir - *Francis A. Schaeffer Institute of Church Leadership Development* (FASICLD)

- Every year more than 4000 churches close their doors compared to just over 1000 new church starts!
- Every year, 2.7 million church members fall into inactivity.
- The United States now ranks third (3rd) following China and India in the number of people who are not professing Christians
- Half of all churches in the US did not add any new members to their ranks in the last two years.

My church growth colleagues have drummed up their reasons for the decline of the Church such as a lack of several key areas that are not functioning right in the local church. These areas are in the realm of *vision, leadership, evangelism efforts, communication, church mentality, capital, child care, youth programs, and being seeker-sensitive.*

When these key areas are not functioning, the existing people will leave and others will not come. However, I have also found other factors that are in real, critical areas such as not teaching the Word or making God's Word boring so that people are turned off. In addition, when our teaching is not tied into the needs of our people, we are failing to contextualize the message to the community. Then, the people will get the feeling that the teaching or the church is not informative, in-depth, or relevant to them, thus they are not receiving anything worthwhile from which they can grow or use in their daily lives.

The following are essential to the Christian's walk of faith:

- A caring, effective love relationship with Jesus Christ as LORD.
- A lifestyle dedicated to obeying God's Will.
- Daily devotional times, prayer, and studying of God's Word.
- A joyful love and willingness to serve our Lord, even through personal sacrifice.
- A witness for Christ without hypocrisy.
- A firm desire to be God's child through trust and obedience.
- A working faith in God's promises for all daily needs and in all situations.

Is Your Church Revenue All You Need? Need More?

2



Some churches struggle with budget problems. The cause can be expenditures are too high; contributions are too low; or both.

There are churches reaching their budget goals, but would like to expand their ministries and outreach if they had more income.

Here are some effective strategies to improve revenues without increasing costs:

- ◆ Communication features in the RDS system include easy ways to send e-mail. More frequent contribution statements stimulate giving. If you've been sending contribution statements annually, move to quarterly. If sending quarterly, send monthly for a trial. Information sent by e-mail saves about \$1.00 per household per mailing over USPS mailings.
- ◆ Send "non-contributor, non-pledger" statements (FR305R1) to those who are making no gifts to the church. These can be sent by e-mail, and look like other contributor statements but selectively go to those without contributions.
- ◆ Give members the convenience of paying electronically (credit/debit card and ACH). Less than 5% of all money spent in the U.S. is by check. Writing checks is no longer a common practice. According to CNN Money, 43% of American adults go a week at a time without using cash at all. Instead, they depend on debit and credit cards. Churches report increased contributions when offering the convenience of credit/debit and ACH payments. An average credit card donation is generally 8 to 10% higher than that of a cash or check donation. Vanco Solutions credit/debit and ACH contributions are automatically integrated with your RDS accounting system.
- ◆ Give members the use of the RDS Unite App. The applications included in the app include electronic giving and other features that strengthen membership ties with the church and with each other. Members can see their history of giving and make new gifts and pledges (recurring giving) using cell phones and tablets. The Barna Group says that 78% of Millennials choose "Community" as their most important vision for the church. Unite (your church) strengthens community.
- ◆ Base appeals for contributing and tithing on the basis of the person's need to give and not on the needs of the church. Emphasis on proportionate giving can be more effective than talking about the church budget. Be open to show members how the church receives and spends its revenues.
- ◆ Give members options so they can contribute to funds, missions, events and ministries of their choice. People give more when they have choices.
- ◆ Use discipline to live within a budget. A "working budget" established for each fiscal year should function as a discipline for all departments and individuals. When budgets are ignored, deficits usually follow.



Budget creation and analysis applications are included in your system that are simple and straight forward. Built into the accounting system are revenue tracking, reporting, and gift response applications designed to help build revenue.

Contact your RDS support team if you would like help.

Schaun Adams Joins RDS Support Team



Schaun brings a wealth of church and accounting experience to RDS.

An accounting degree with emphasis in computer science is a perfect fit.

She does the data processing for her church and has served other not-for-profit agencies.

Not Just Another App



The goal in designing the Unite App was not to just have another church app. The goal was to provide churches with a tool that accomplishes these initial features:

- Help members, pastors and staff become better acquainted
- Make it easy to visit and communicate with each other
- Enable convenient ways to tithe and make gifts
- Enable members to update their personal information, relieving the staff of this work

To make this as efficient as possible the connection between the Unite App and the church database is made in real time. A change in the App updates the database.

- Encourage members to import their family or personal photo. This helps members identify photos with names.
- Inform members about the benefits to the church by using electronic payments, which are integrated with the church accounting. E-checks for recurring and one-time gifts are almost cost-free for the church.

Additional features and capabilities will be added to the App, such as activity and event enrollment (with payments), connection to the church calendar(s), leadership management, and volunteering.

Bring Your Congregation



Unite your congregation with RDS Unite App.
Free for users of cloud-connected RDS Connect.



Electronic Giving Increases Your Revenue



Give members the convenience of on-line giving. Fewer than 5% of expenditures are made by check, so don't require members to pay tithes and gifts by check.

The convenience and economy of Vanco gifts are automated with RDS accounting.

RDS Training Classes

Attend RDS training classes and receive hands-on individual training. You will find capabilities you didn't know existed and learn many time savers.

Update Your Skills - Learn New RDS Features

200 to 300 new features, enhancements and shortcuts are added yearly.



Monday class	Member Records and Contact Management
Tuesday class	Activity Records and Insta Check-In
Wednesday class	Contributions and Bank Reconciliation
Thursday class	General Ledger and Accounts Payable.
Friday class	Payroll and Accounts Receivable

Enroll in classes for these dates:

Oct 17-21	Nov 14-18	Dec 12-16
Jan 16-20	Feb 20-24	Mar 20-24

Contact Gail Miller at (800) 337-6328 or (405) 840-5177 or email at gail@rdsadvantage.com to enroll.

Reset Your Password for Security

4

Hackers get personal information; companies threaten to charge you to protect your information. A lapse of security anywhere in the chain can expose your sensitive data.

Everyone may not be familiar with terms like “Terminal Services” or “Remote Desktop Session.” These terms mean you are using computer resources that are located elsewhere. We use encryption keys and restricted permissions to keep your data safe. Like leaving your front door unlocked, using a default password, weak password or writing your password down can allow someone to get into your data.

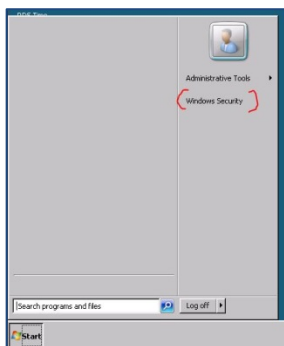
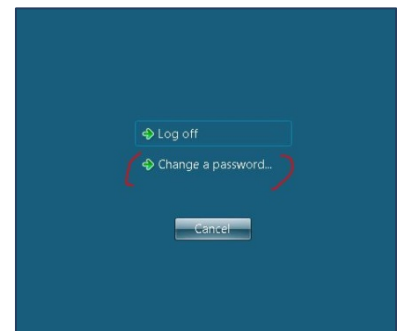
There are two sets of login and password combinations that help secure your data. The first one is your “remote desktop session.” This is your first layer of security. If you are using a machine that doesn't belong to you (never a good idea) make sure to delete the icon if you saved one, and then empty the recycle bin.



To change your password you first need to log into your remote desktop session. Most people save a copy of their session as an icon similar to this one:

1. Click the 'Start' button. Select 'Windows Security' marked in red (below).

2. Select 'Change Password'



3. Type in your current password and your new password, then your new password again and select the arrow.

4. If your password was something like Abc123!, reset your password.

How to Enter Strong Passwords



- Strong passwords are important to your security.
- Don't use obvious words, such as “password,” which can be broken in less than a second.
- Create a base password, such as something easy to remember. (Spouse Name = Ellen)
- Change the characters e=3 L=7
- In this example, “Ellen” becomes 3773n
- Then add the site to the end, thus creating a unique password for each site and still be easy to remember.
- We will say your bank name is Bank
- Change the characters 8=B and a=@
- In this example, “Bank” becomes 8@nk
- Combine the two passwords and you have 3773n8@nk

If you have any questions, give us a call.

- Change your password at least every 90 days, but make sure it is something you can remember.
- If you are on a public (free) Wi-Fi site you are fairly safe to surf sites that you do not have to log in to (news, weather etc.). If you are on a public Wi-Fi access point, like your favorite coffee shop, anyone on that access point can potential steal your password and have access to those accounts.

Mickey Whitlow, RDS Cloud Support Technician

For more information:

<https://www.cnet.com/how-to/the-guide-to-password-security-and-why-you-should-care/>