

Interface

Making Ministry Manageable



Enhancements for Vanco Services Credit/ Debit Card and ACH Entries

Recent versions of RDS include enhancements for accounting entries from Vanco Services.

- Users can select the beginning and ending Deposit Date when importing Vanco records.
- One Vanco account can have records downloaded for many different bank accounts. When importing Vanco records all records for the location entered by the user will be imported based on the deposit date.
- Added a new option to print by "Import Bank/Deposit Date." This will print totals for each bank, and will page break on each bank.
- Added a field for "On-line Vanco Default Bank Account." If a bank account is entered in this field and the user downloads records from Vanco, this will be the bank account the records for this revenue code will be assigned. This can be a different bank account downloaded in OL100V.
- In FR401 Financial Records Entry you can download from Vanco by Deposit Date instead of Settlement Date.
- One Vanco account can have records downloaded for many different bank accounts.
- Able to repeat download process using new OL102 program.
- Each Revenue Code can have an "Online Vanco Default Bank Account." This will be the bank account used when records are downloaded for this revenue code. If there is no "On-line Vanco Default Bank Account", the RDS bank account associated with the Vanco account will be used.

Vanco has some materials available churches can use to stimulate use of credit/debit card payments.

Please look at <http://connect.vancopayments.com/custom-church-messages-for-e-giving>



Vanco Payment Solutions New Program Charges

Vanco is offering new program options that offer benefits for both very small and very large users of their services.

For example, for smaller users they offer a five dollar a month service. There are options for large users who need multiple pages of receipts at forty dollars a month. No matter which you choose initially you can move from one plan to another at any time.



No matter which plan you choose, all payments and gifts interface with your RDS Advantage accounting system for integrated data entry.

Features include credit/debit card transactions, eCheck, WebPay, Online registrations, Mobile giving, Recurring giving (ACH), Desktop USB credit card swipe, and Virtual terminal.

Contact RDS Support with any questions.

Need Material For A Sunday School Lesson?

The story of the storm on the Sea of Galilee is told in all four of the Gospels.

Would you like to see the boats in use during this time?

Because of the remains of a boat found in 1986 and its restoration, it is possible to know how these boats looked during the time of Christ.

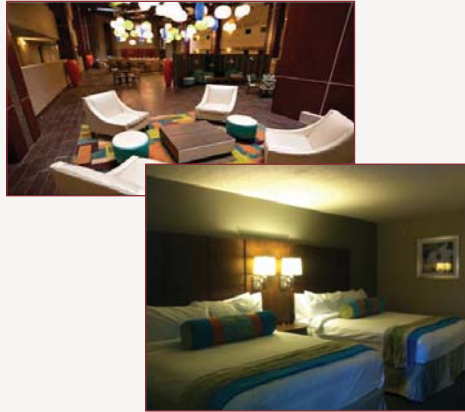


Our President, Dick Webber, is a woodworker who made a scale model true to the restored boat, now on display in a museum on the Northwest corner of the Sea of Galilee. Dick's model is thought to be one of only two or three in the world that is authentic to the construction of these first century boats. You can see a slide show and the details of how to build a model at <http://dickwebber.publishpath.com/>

Use the slide show and photo of the boat model to bring to life this story as you teach this scripture and others that involve events on the Sea of Galilee.

Wyndham Garden North

A new Wyndham Garden Hotel (North) at 6200 N. Robinson in Oklahoma City has just opened three minutes from the RDS office building. We have arranged for a discounted rate for those coming to RDS for training of \$79.00.



You can call 405.286.4777 for reservations and ask for the RDS rate. This economical rate helps hold down your costs while attending training. The hotel has dining services for breakfast, lunch and dinner, free WI-FI, pool, whirlpool, microwave and refrigerator and a fitness center.

Five new reports have been added in Version 9.18.05:

- AP311 - Detail Vendor Analysis Report. This report includes both Open Items and History data
- MR301OD - Report to include baptism dates and six user-defined dates
- MR301GL - A new report showing Member Gains and Losses
- CS303 - A new report in System Control that tracks history of users logging in and logging out
- PR107 - This program allows users to modify Payroll History for new Vacation and Leave hours

RDS Training Classes

- If you have never attended a training class;
- If you have not attended a class in the last two years;
- If you have taken on different responsibilities;
- If you want to learn about new features and capabilities

THEN - sign up for a class at a convenient time for you.

You can enroll for just the classes that cover your work area:

Monday.....Member Records and Contact Management

Tuesday.....Activity Records and Insta Check-In

Wednesday...Contributions and Bank Reconciliation

Thursday.....General Ledger and Accounts Payable/Cash Disb.

Friday.....Payroll and Accounts Receivable

More than 300 new features and enhancements are added to RDS Advantage each year. You will find capabilities you didn't know you had, and learn neat shortcuts and time-savers.

Contact Gail Miller at (800) 337-6328 or (405) 840-5177 to enroll.

Enroll in classes for these dates:

Apr 6-10	May 4-8	Jun 8-12
Jul 20-24	Aug 10-14	Sep 21-25
Oct 12-16	Nov 16-20	Dec 7-11

